

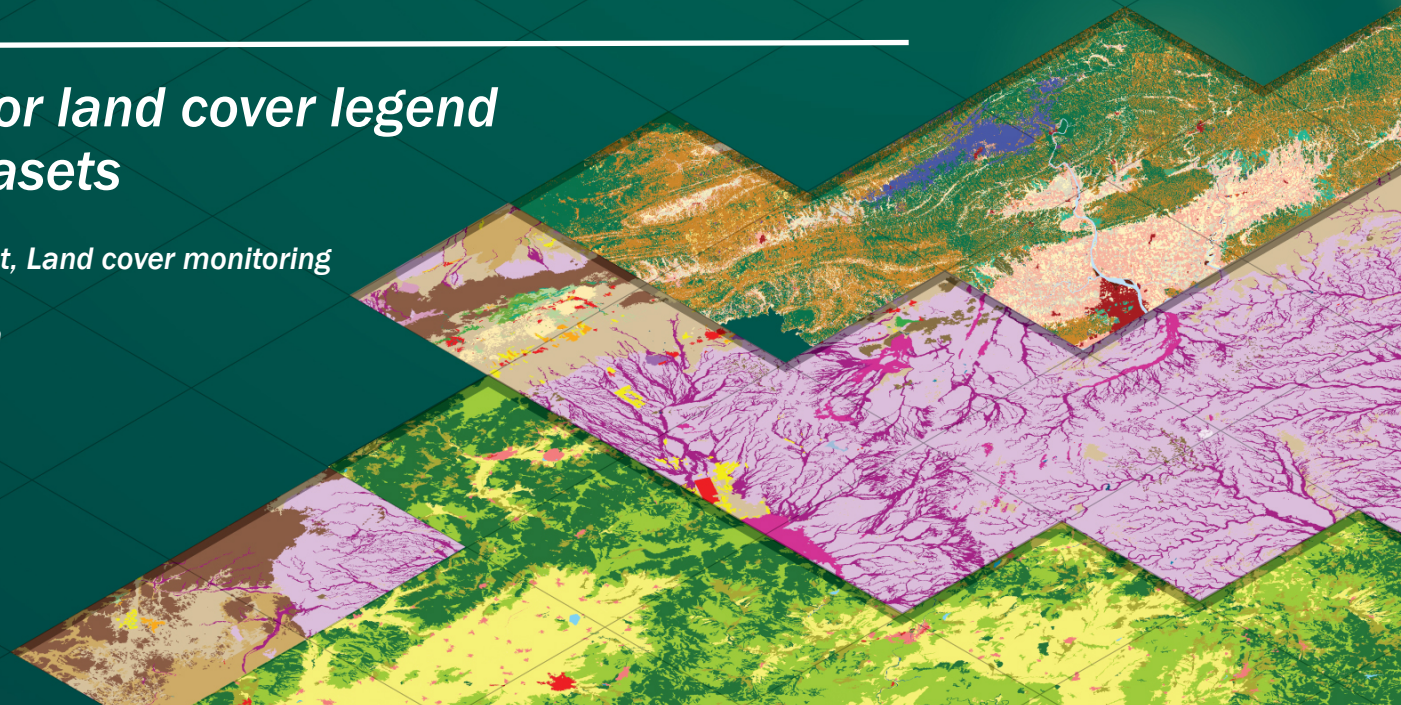


Food and Agriculture
Organization of the
United Nations

Land Cover Legend Registry

*A FAO registry for land cover legend
and related datasets*

*Fatima Mushtaq – Consultant, Land cover monitoring
Geospatial Unit – NSL, FAO
20th August 2021 – Pakistan*



What is Registry?

- Land Cover Legend Registry is a database recently established and maintained by FAO for accessing land cover legend, legend class, datasets and related reference documents.
- It is based on international standards (ISO 19144-1 and ISO 19144-2).
- Anyone can access it and download data in different file formats.
- Metadata for this registry can be accessed from ckan [platform](#).
- This registry supports multi - languages e.g., English (primary), Spanish, Urdu, French etc.
- It also supports legends developed for various purpose in various sectors to support national monitoring programs etc. (e.g., agriculture sector, water management, disaster management, rapid risk assessment etc.)
- Recently, a publication titled “[Register Implementation for Land Cover Legends](#)” has been published.



<http://www.fao.org/geospatial/resources/data-portals/en/>

<http://www.fao.org/hih-geospatial-platform/en/tools/land-cover-legend-registry/>

What is the purpose?

Provide a library (at national, regional & global level) for LC Legends, LCL classes and their relationship through Unified Modeling Language (UML) model – in support to the HiH GeoP, ISO TC211, UN-GGIM and others.

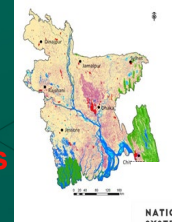
Create consistency and sustainability of land cover monitoring.

Support Sustainable Development Goals (SDGs - 1, 2, 3, 6, 11, 13, 15).

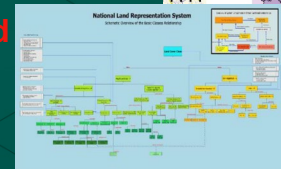
Improve comparability, similarity and interoperability of land cover legends using Land Cover Meta-Language – based on ISO 19144-1 and ISO 19144-2.

Make the required reliable and comparable land cover and land cover change data accessible to local, national and international initiatives.

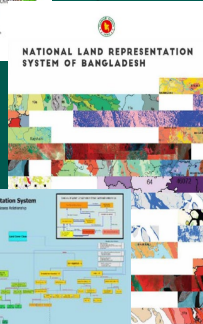
LC datasets



LC Legend



LCL Class



How it works?

The screenshot illustrates the workflow of the application. It features a main data table, a modal for selecting a dataset, a detailed reference view, and a file list.

Id	Alpha Code	Name	Country	Country Code (M49)	Legend Type	Year	Files	Source Reference	Status
1	L1	Globcover legend	Global	1	LCCS3	2009		REF-1 REF-2	VALID

Dataset Selection Modal:

Id	Alpha Code	Name	Geonetwork
1	G1		
2	G2	1 DS01 Land cover of Cote d'Ivoire - Globcover	098ab48f-2af1-41df-a69d-d5177e2acec6
3	G3	2 DS02 Land cover of Liberia - Globcover	68f12101-c75a-45d0-9d85-5bb49859040d
4	G4	3 DS03 Land cover of Madagascar - Globcover	ed634129-37b9-40a6-8024-05b0e0b626f0
		4 DS04 Land cover of Gambia - Globcover	5334bca3-71d6-4f46-8008-06675c5fb70a
		5 DS05 Land cover of Sierra Leone - Globcover	973fdcbe-c347-47a7-9af7-e2e57729a35b

Reference Detail Panel:

Reference Id: Ref-1
Reference File: Ref_1.pdf
Reference Source Item Identifier: GLOBCOVER 2009

File List:

- L1.xsd
- 1_1.htm

Reference Detail for Land cover of Cote d'Ivoire - Globcover Regional:

This land cover data set is derived from the original raster based Globcover regional (Africa) archive. It has been post-processed to generate a vector version at national extent with the LCCS regional legend (46 classes). This database can be analyzed in the GLCN software Advanced Database Gateway (ADG), which provides a user-friendly interface and advanced functionalities to breakdown the LCCS classes in their classifiers for further aggregations and analysis.

The data set is intended for free public access.

The shape file's attributes contain the following fields:

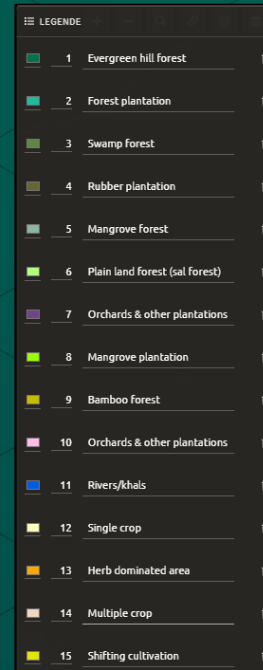
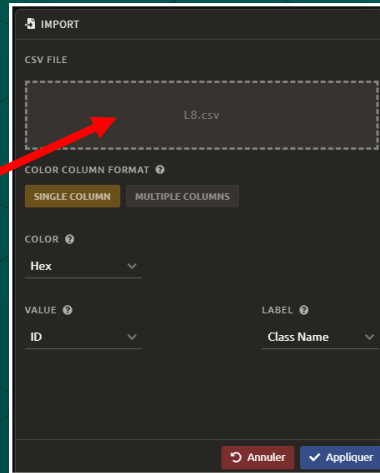
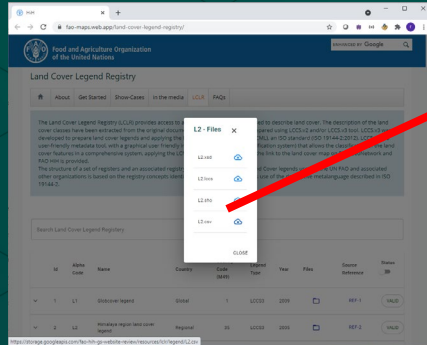
- Area (sqm)
- ID
- Gridcode (Globcover cell value)
- LCCCode (unique LCCS code)

You can download a zip archive containing:

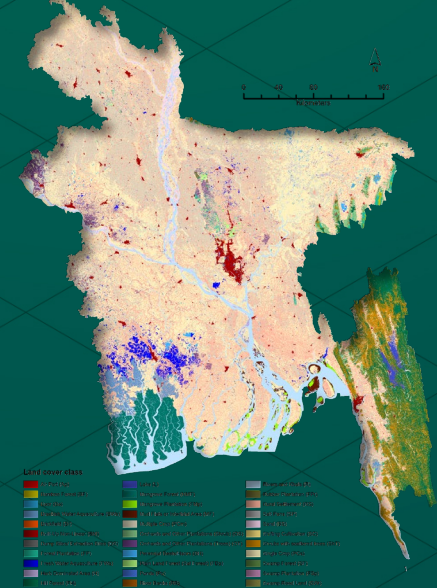
- the shape file (.shp)
- the ArcGIS layer file with global legend (.lyr)
- the ArcView 3 legend file (.avl)
- the LCCS legend tables (.xls)

How it integrates with cloud computing platforms?

Legend integration in SEPAL platform



Bangladesh land cover



<https://sepal.io/process>

THANK YOU!

Coordinator:

Fatima Mushtaq – Fatima.Mushtaq@fao.org

Matieu Henry – Matieu.Henry@fao.org

Contributors:

Antonio Di Gregorio (FAO)

Amit Ghosh (FAO)

Douglas Obrien (ISO/IDON)

Elisee Tchana (FAO)

Federica Chiozza (FAO)

Gianluca Franceschini (FAO)

Karl Morteo (FAO)

Michael Tefera (FAO)

Rashed Jalal (FAO)

Important links:

Web platform

<http://www.fao.org/geospatial/resources/data-portals/en/>

<http://www.fao.org/hih-geospatial-platform/en/tools/land-cover-legend-registry/>

Metadata

<https://data.apps.fao.org/catalog/organization/about/lcl-registry>

LCLR publication

<http://www.fao.org/documents/card/en/c/cb5130en>

ISO standard

<https://www.iso.org/standard/44342.html>